

# FOR LEASE/SALE

## 3,143 SF Retail Space at Freestanding Retail Center

# Mid Rivers Mall Drive & I-70

290 Mid Rivers Mall Circle Drive • St. Peters, MO 63376



**3,143 SF  
Available**

- ❖ Located at I-70 and Mid Rivers Mall Drive (Dillard's, Macy's, JC Penney, and Sears)
- ❖ Located Directly Across from Mid Rivers Mall
- ❖ Convenient Surface Parking
- ❖ New tenancy of Panera Bread now open joining Mattress Giant
- ❖ Building total Square Footage is 12,500
- ❖ Architectural Element Signage Available
- ❖ Traffic Counts:  
I-70 149,000 vpd  
Mid Rivers Mall Drive 30,000 vpd

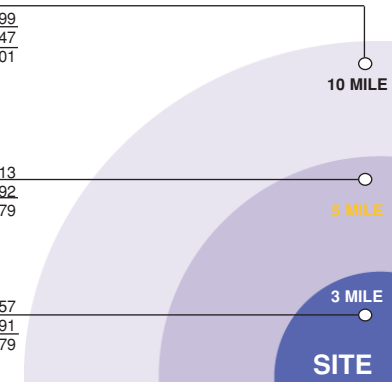


For more information  
please contact:  
Sansone Group  
120 S. Central  
St. Louis, MO 63105

Population	325,999
Households	122,247
Avg. Household Income	\$80,901

Population	154,113
Households	56,292
Avg. Household Income	\$78,779

Population	58,557
Households	20,491
Avg. Household Income	\$77,579



## See Reverse for Site Plan

Mark Kornfeld  
mkornfeld@sansonegroup.com  
Tim Cherre  
tcherre@sansonegroup.com  
p) 314.727.6664  
f) 314.727.6101  
[www.sansonegroup.com](http://www.sansonegroup.com)

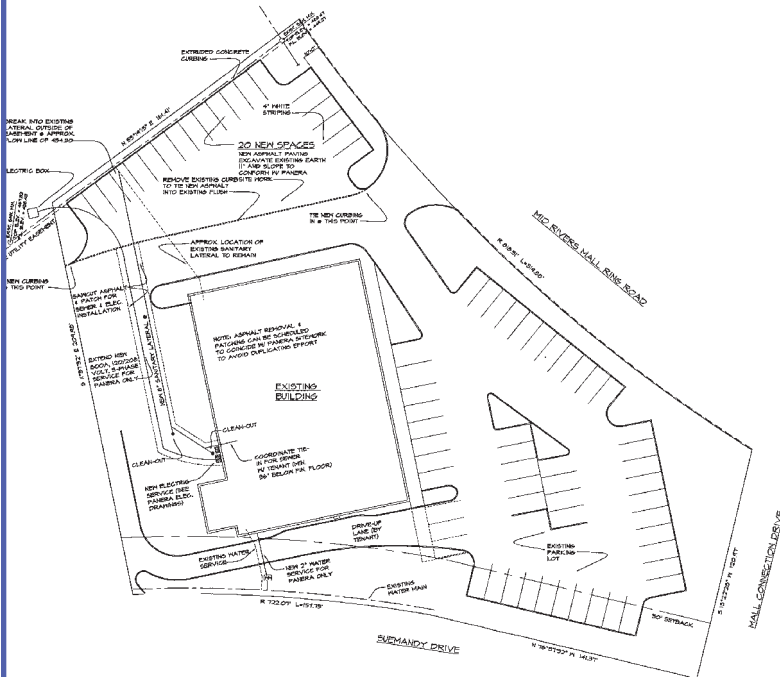
Guiding Visionary Properties <sup>sm</sup>

OFFICE

INDUSTRIAL

RETAIL

# 290 Mid Rivers Mall Circle Drive



The information contained herein is not warranted, although it has been obtained from the owner of the property or from other sources that we deem reliable. It is subject to change without notice. Seller and broker make no representation as to the environmental condition of the property and recommend purchaser's independent investigation.



For more information  
please contact:

[www.sansonegroup.com](http://www.sansonegroup.com)

Mark Kornfeld  
mkornfeld@sansonegroup.com  
Tim Cherre  
tcherre@sansonegroup.com  
p) 314.727.6664  
f) 314.727.6101

Sansone Group  
120 S. Central  
St. Louis, MO 63105