

FOR SALE

Denny's Site

181 HOMER M. ADAMS PKWY. • ALTON, ILLINOIS



Retail At-A-Glance

- ❖ Excellent visibility directly across the street from regional mall Alton Square (Sears, Macy's, JC Penney)
- ❖ Pylon signage available
- ❖ Block construction built in 1986
- ❖ Shares signalized light with Alton Square Mall
- ❖ Traffic Counts:
Homer M. Adams Pkwy.: 20,900 vpd
- ❖ For Sale: \$500,000

4,755 SF
ON **1.17 ACRES**

Population51,756
Households21,581
Avg. Household Income\$51,982

5 MILE

Population33,419
Households14,017
Avg. Household Income\$50,954

3 MILE

Population5,081
Households2,119
Avg. Household Income\$47,794

1 MILE

SITE



For more information please contact:

Sansone Group
120 S. Central
St. Louis, MO 63105

Karen Shaw, SCLS & Mike Pettit
kshaw@sansonegroup.com
mpettit@sansonegroup.com
p) 314.727.6664 • (f) 314.727.6101

www.sansonegroup.com

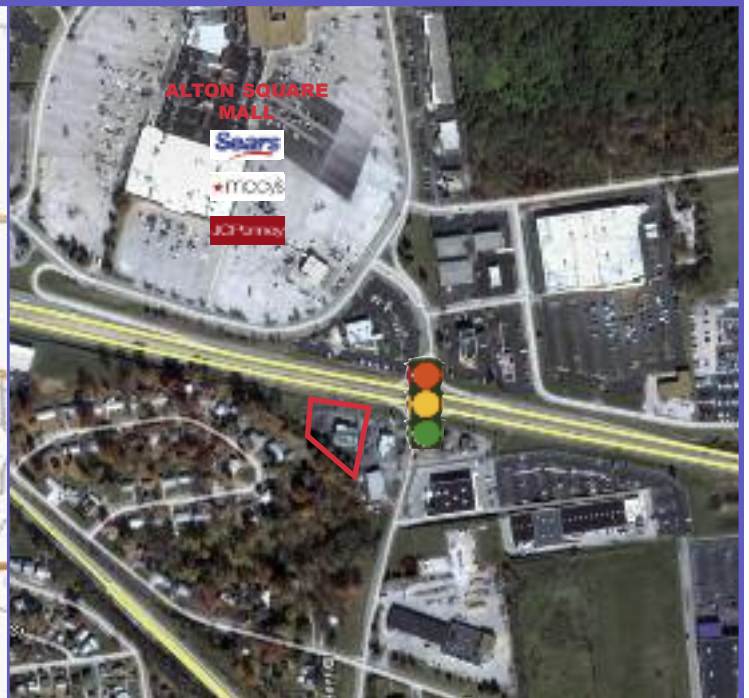
Guiding Visionary Properties sm

OFFICE

INDUSTRIAL

RETAIL

Denny's Alton Site



The information contained herein is not warranted, although it has been obtained from the owner of the property or from other sources that we deem reliable. It is subject to change without notice. Seller and broker make no representation as to the environmental condition of the property and recommend purchaser's independent investigation.



www.sansonegroup.com

For more information
please contact:
Sansone Group
120 S. Central
St. Louis, MO 63105

Karen Shaw or Mike Pettit
kshaw@sansonegroup.com
mpettit@sansonegroup.com
p) 314.727.6664
f) 314.727.6101