

FOR LEASE

7,000 SF Retail Space
In Central West End Historic Building

Lister Building Retail Space

465 N. TAYLOR • ST. LOUIS, MO 63108



- ❖ Class A Historic Rehab
- ❖ 2,500 SF Retail Space on First Floor, 5,000 SF Lower Level
- ❖ 3 ADA Like-new Bathrooms, 2 on lower level with showers
- ❖ Parking negotiable, utilities separately metered
- ❖ Sprinkled loft ceilings with track lighting, and security system
- ❖ Ideal for Fitness & Wellness center or Art Gallery
- ❖ Walking Distance to Heavy Residential area



For more information
please contact:

Sansone Group
120 S. Central
St. Louis, MO 63105

Lease Rate

\$4,500/month

Population	398,699
Households	158,621
Avg. Household Income	\$52,468

Population	161,577
Households	63,869
Avg. Household Income	\$47,949

Population	23,098
Households	10,971
Avg. Household Income	\$63,292

5 MILE

3 MILE

1 MILE

SITE

See Reverse for Interior Photos and Floor Plan

Joi Niedner

joi@sansonegroup.com

(p) 314.727.6664

(c) 314.304.4900

www.sansonegroup.com

Guiding Visionary Properties SM

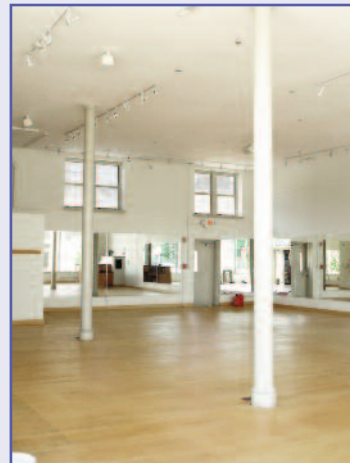
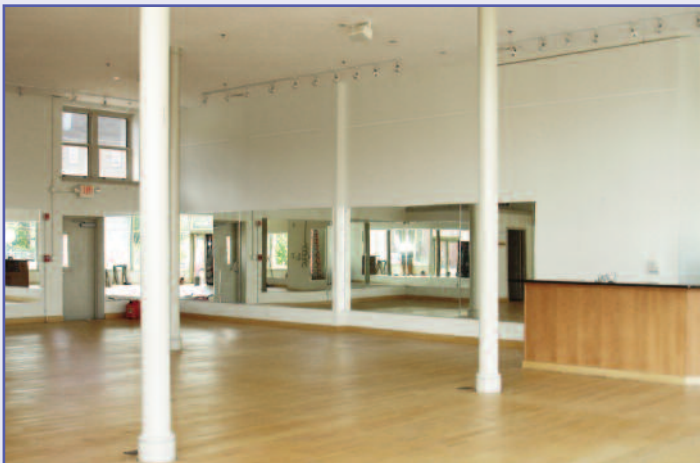
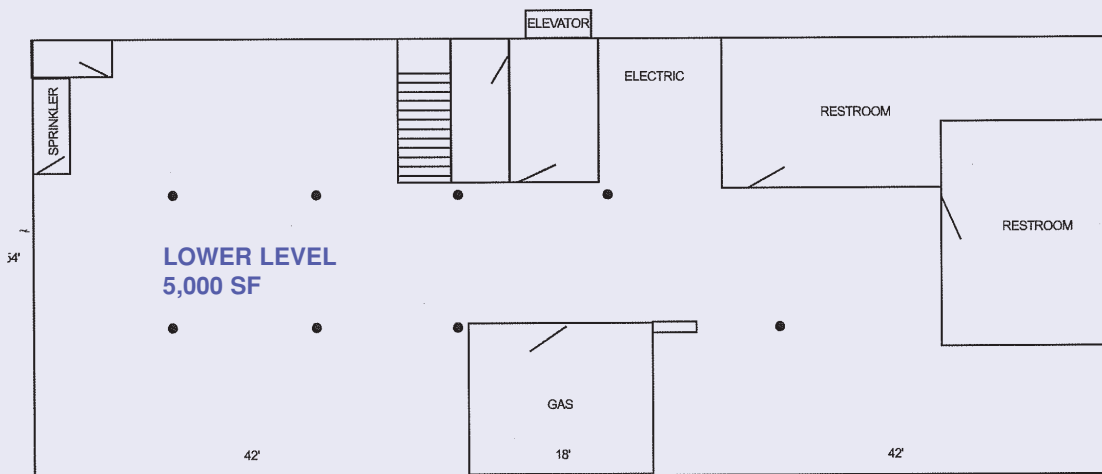
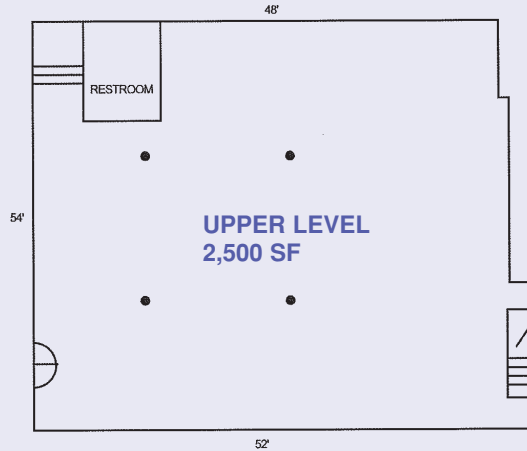
OFFICE

INDUSTRIAL

RETAIL

Lister Building • 465 N. Taylor

DIRECTIONS: Kingshighway,
north of Highway 40, Right on
Lindell, Left on Taylor.



The information contained herein is not warranted, although it has been obtained from the owner of the property or from other sources that we deem reliable. It is subject to change without notice. Seller and broker make no representation as to the environmental condition of the property and recommend purchaser's independent investigation.



For more information
please contact:

www.sansonegroup.com

Joi Niedner
joi@sansonegroup.com

p) 314.727.6664
(c) 314.304.4900

Sansone Group
120 S. Central
St. Louis, MO 63105