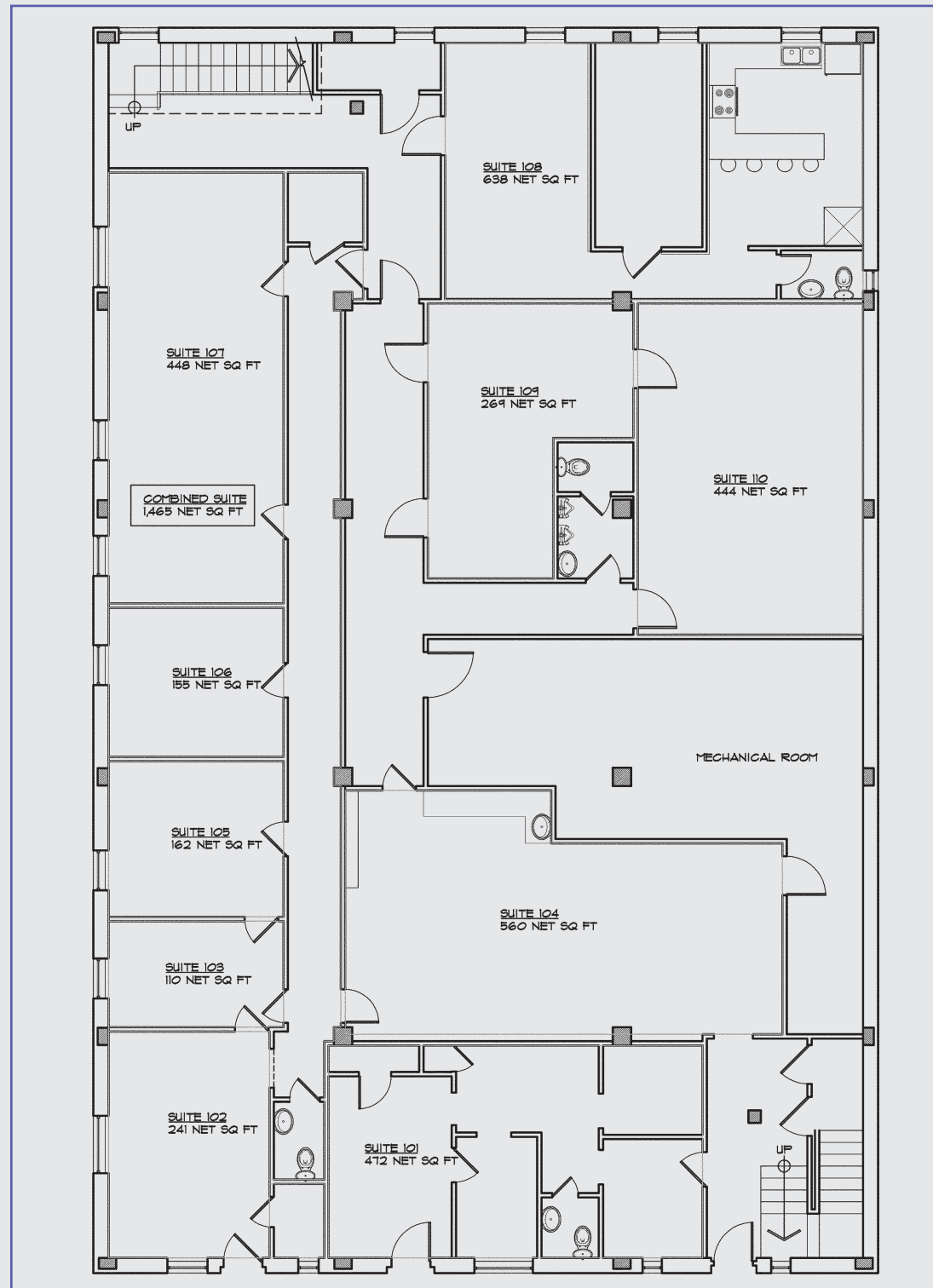


Basement Floor Plan



FOR MORE INFORMATION PLEASE CONTACT:

Mike Driver

mdriver@sansonegroup.com

(p) 479 251-7771

(c) 479 435-0238

FOR LEASE

3 Months Free rent offer on a 5 year term lease if a lease is signed by January 31st, 2011



\$12 - \$17 PSF

Hathcock Building

240 North Block Street
Fayetteville, Arkansas 70701

FEATURING

- Convenient to Court House, Downtown, & Post Office
- Corner of Dickson and Block
- Connector between Downtown & Entertainment District
- Dedicated parking lot
- On-Site Storage Space Available

AVAILABILITY

FLOOR	RSF
BASEMENT	3,499
FIRST	3,107 (DIVISIBLE)
SECOND	4,147 (DIVISIBLE)
TOTAL NET AREA:	10,753

FOR MORE INFORMATION PLEASE CONTACT:

Mike Driver

mdriver@sansonegroup.com

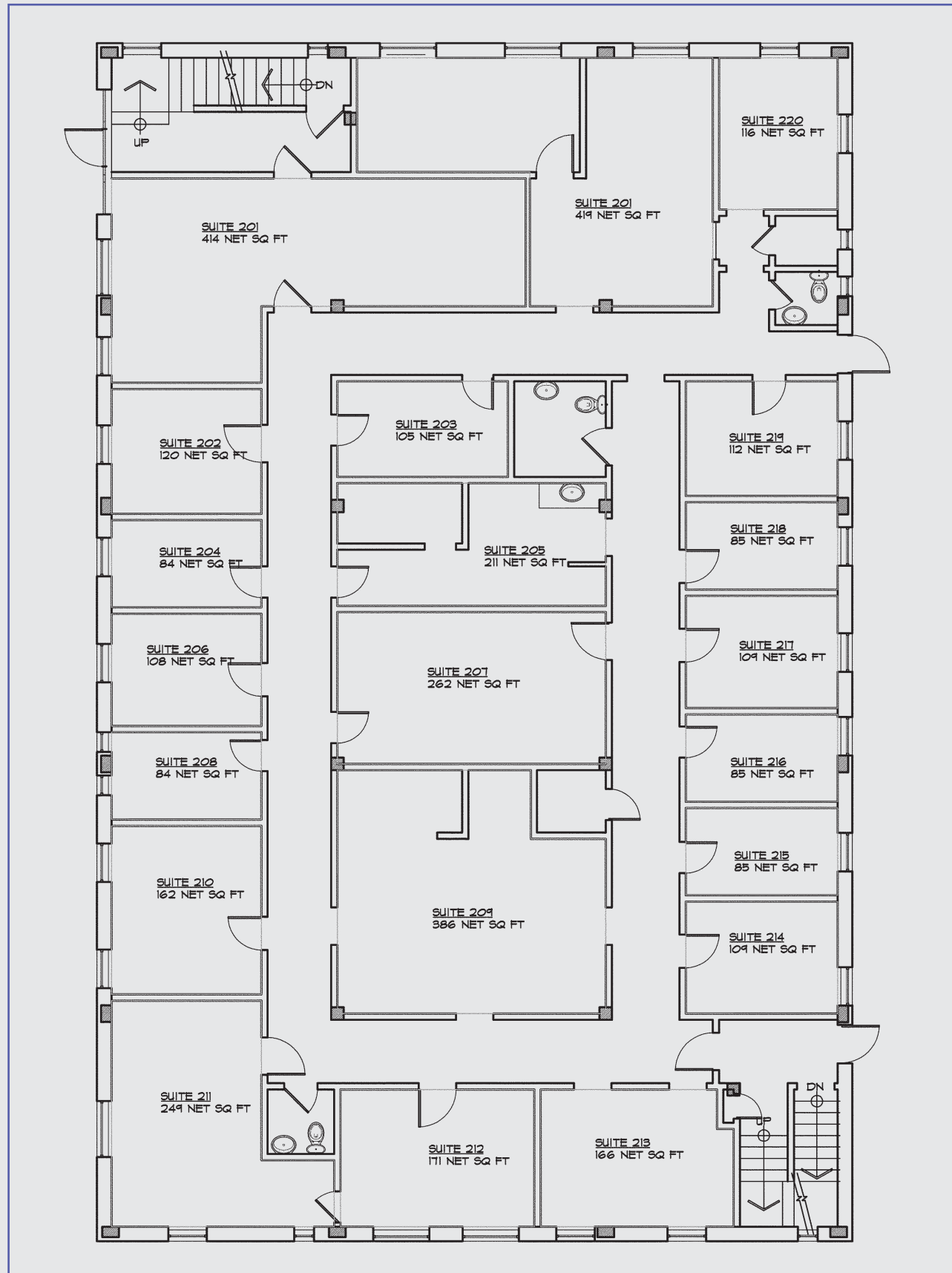
(p) 479 251-7771

(c) 479 435-0238

Floor Plan on Back



First Floor Plan



Second Floor Plan

