

# FOR LEASE



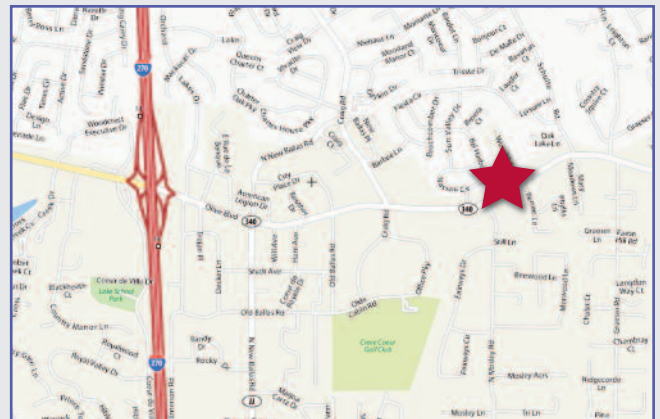
**\$15.00/SF  
NNN**

## 11255 Olive Blvd.

Creve Coeur, MO 63141

### FEATURING

- 5,600 SF Total (2 Levels)
- Monument Signage on Olive
- Furniture Available & Move in Ready (Price Negotiable)
- Great Single Tenant User Building
- 4.8/1,000 Parking



FOR MORE INFORMATION PLEASE CONTACT:

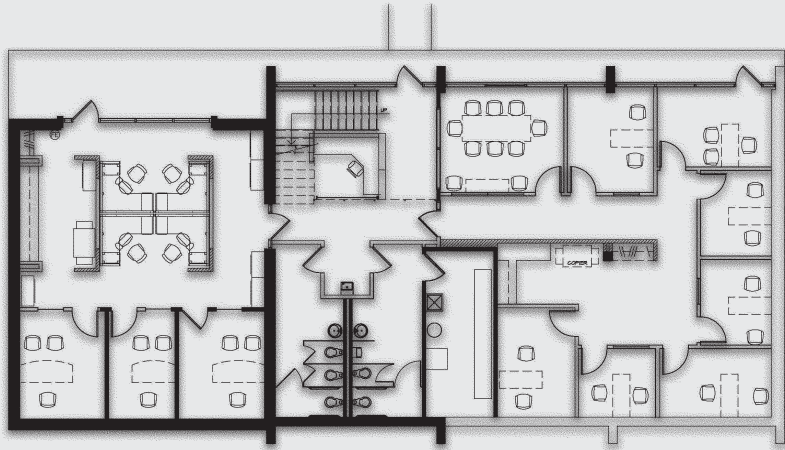
**Tom Bajardi, CCIM, SIOR**  
tbajardi@sansonegroup.com

**314-727-6664**

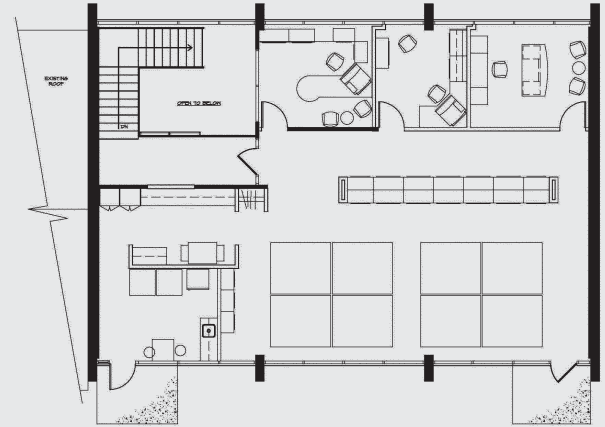
Space Plans & Photos on Back



# SPACE PLANS & PHOTOS



**First Floor**



**Second Floor**

